

**FREE  
POSTER  
INSIDE!**

**600 CLASSICS CRUSHED!  
STOP THE INSANITY—P.10**

**ALLOY CRATE ENGINES ▶  
THE LATEST FROM  
GM, FORD & MOPAR**



# POPULAR **HOT RODDING**

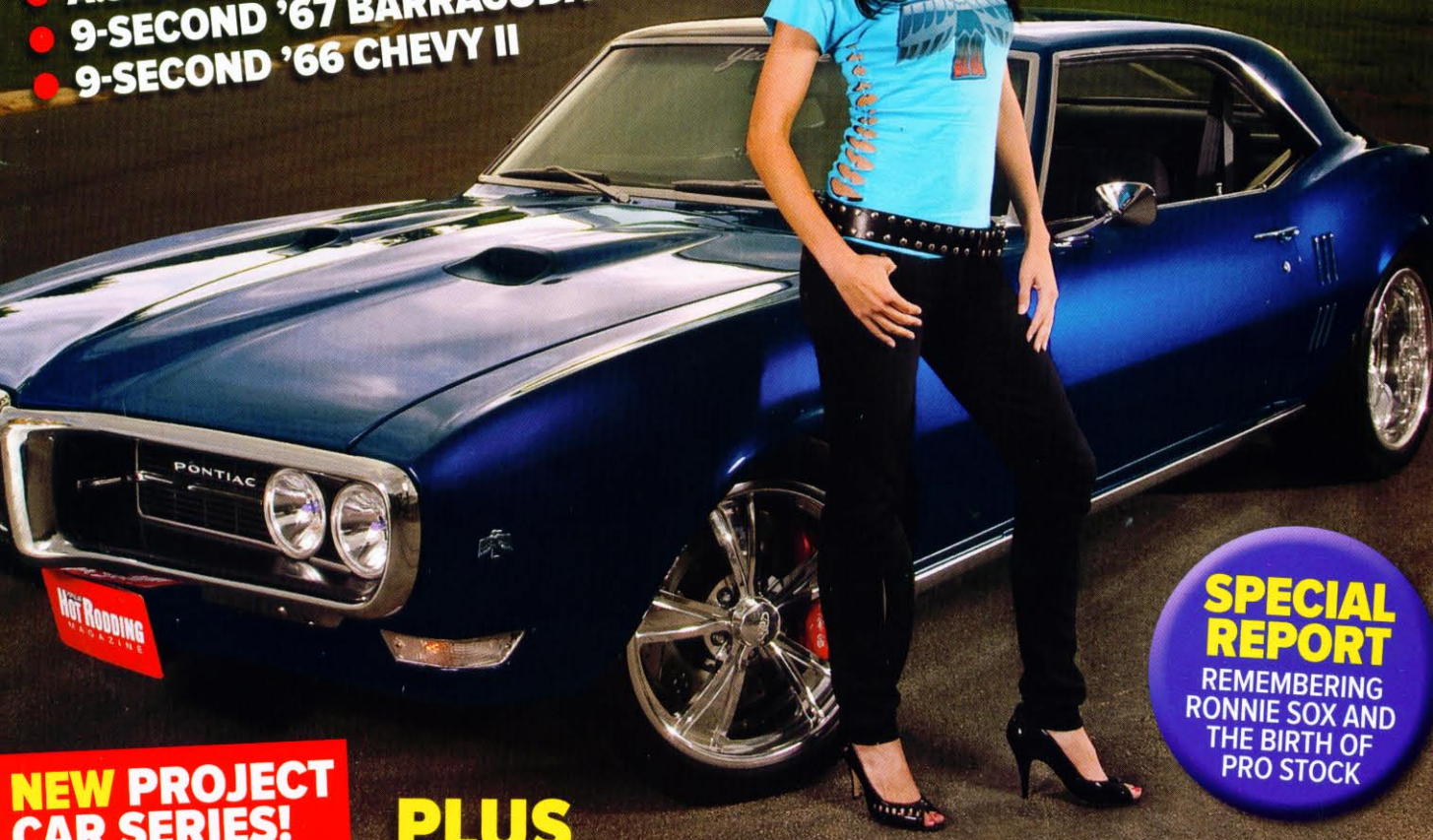
**LIGHTWEIGHTS WITH**

# **BIG POWER**

**CHOOSE YOUR WEAPON**

- A.J.'S LS3-POWERED '68 FIREBIRD
- 9-SECOND '67 BARRACUDA
- 9-SECOND '66 CHEVY II

**A. J. FROM OVERHAULIN'  
GETS HER OWN RIDE  
—DETAILS ON P. 28**



**SPECIAL  
REPORT**  
REMEMBERING  
RONNIE SOX AND  
THE BIRTH OF  
PRO STOCK

**NEW PROJECT  
CAR SERIES!**



**NASCAR-STYLE '75 LAGUNA**

**PLUS**

**15 WAYS TO LOSE WEIGHT  
& ADD PERFORMANCE!**

**BUILD IT! MOPAR 318  
WITH CHEAP IRON HEADS & 425 HP!**

**ADD OVERDRIVE TO ANY FORD  
TCI'S HOT AOD-E KIT**

OCTOBER 2008 • \$5.99

7 25274 30269 7 10

A SOURCE INTERLINK MEDIA PUBLICATION

# UNDER CONSTRUCTION By Liz Miles



## 1969-70 CAMARO GET YOUR KICKS FROM RT. 66!

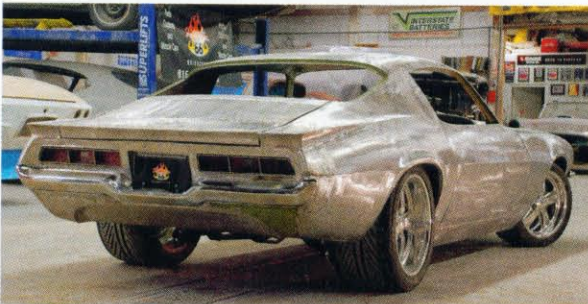
We've seen a lot of cars being built through the years, and know that it takes more than high-dollar parts to make a car stand out. This '70 Camaro built by Rt. 66 Motorsports displays creativity that really makes the car eye-catching.

Rt. 66 Motorsports started out with a fresh frame from Art Morrison that uses all C5 suspension components called the Max-G PROfile. This setup gives the car a lower center

of gravity without losing ground clearance. Usually the first thing to scrape the ground is the exhaust, but they've taken care of that problem by fishing the tubing through passages built into the frame. The Morrison piece also incorporates a three-link coilover suspension in the rear, attached for a Ford 9-inch rearend.

The power comes from an all-aluminum LS2 motor and is backed by a comfortable 4L60E automatic transmission. The trend of using these modern motors and transmissions fits well into this build, as everything is brand new in this car.

The most unique part of this car is the revised tail section. Rt. 66 Motorsports grafted '69 Camaro taillights and sculpted an all-metal spoiler. They've successfully taken the styling, so admired in the '69, and moved



**"The fabrication work on this car sets it apart from the typical 'brake and wheel package' Camaro."**—Arvid Svendsen, Rt. 66 Motorsports



They aren't found on eBay like this! Rt. 66 Motorsports custom fabricated this dash and incorporated a tilt column to add comfort and functionality to this '70 Camaro.

it right on over to its younger brother. There is custom sheetmetal work all over this car, including extended rocker panels, shaved door handles, fabricated chin spoiler, welded seams, custom interior panels, custom inner fenders, and a smooth firewall.

Typically, I think it's a shame to paint over the painstaking work done to an all-metal car like this, but the choice of color couldn't be better than the pearl red waiting for it.

This car is soon to top the list of Rt. 66 Motorsports' highest accomplishments, and they plan to continue experimenting.

