

# NOVA

*A Publication of National Nostalgic Nova*

# TIMES

September 2003

Volume 22

Number 9





## Quick Change

### 1967 Nova 2 Door Wagon

Owners: Bill & Debbie Jelinek  
Orland Park, IL  
Designed & Built by:  
Route 66 Motorsports, Inc.  
New Lenox, IL  
Brookfield, IL

In January we received a 1967 Chevy Nova that was purchased from New Mexico. This six cylinder four door wagon was rust free and very dry. The vehicle was originally purchased for resale, but after seeing it we started thinking about keeping the wagon and building something out of it. After tossing some ideas around, we sketched up a few drawings of what we could do with the vehicle. Not a whole lot of time was spent before we jumped into taking the vehicle apart. We purchased some two door Nova B-pillars, and doors and the rest just came to us as we went along.

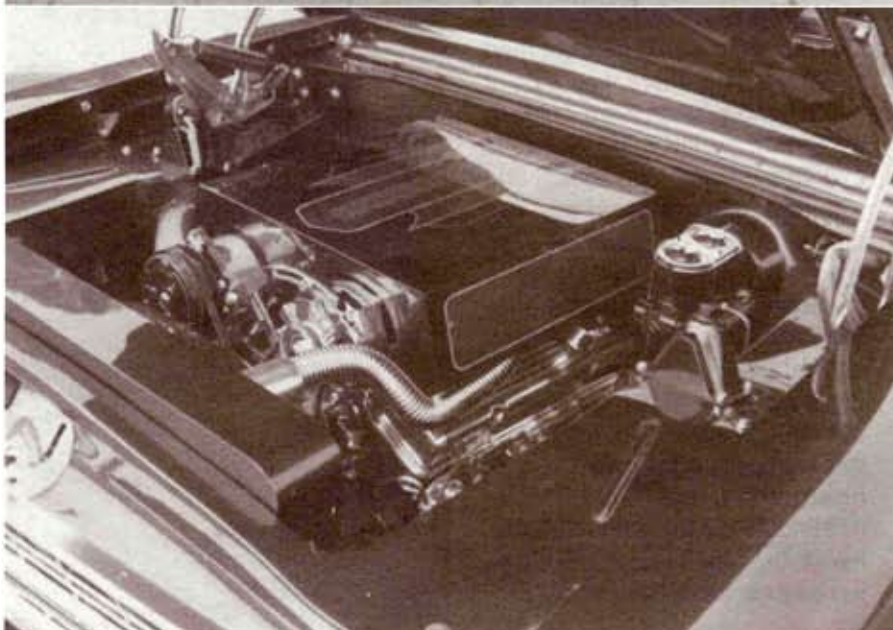
Originally we were going to build just a two door and then things got carried away! Nearly everyday new ideas were being developed, and most of them were being used! You could say that we "flew by the seat of our pants" on this project! Ideas were just coming to us and we were going with all of them. Everything that we were doing just seemed to fall in place; there was a point that we thought we were going to be struck by lightning because everything was going so fast and with such little complications! The only problem we came across was eliminating the tailgate hinges and arms. We tried everything from cutting down reversing and fabricating new ones. Nothing work to bring the gate down correctly without interfering with the bumper. After two days of headaches we decided to refabricate the body and tail gate, french the rear bumper and called it a day.. actually two days!





One night we were thinking about eliminating the drip rails but everyone is doing that lately so we mocked up the fill with tape and board instead. Next thing we knew it was midnight the drip rails were filled, and we happened to add a third brake light in the roof! We laid down the back lights to match the pillar angles we had built. All of the body moldings were cleaned up and eliminated. Then we thought the body was too smooth, so the cowl was filled and the wipers were eliminated. Since the motor compartment and interior were looking a bit neglected we decided that they needed a little fabricating too. The interior has all fabricated top panels and a dash made from two different dash boards and a fabricated center. The motor compartment was cut out and refabricated to shorten the look. We also rolled the core support under the grill, fabricated a fan shroud, motor shroud and many other components. We tried to hide as much as possible for a clean, smooth look. All the time we were cutting and fabricating we were in touch with Wayne Bushey on suspension and other parts; his equipment simplified the process tremendously!

Finally, it was time to paint the wagon. We originally were going to paint it a pearl orange until we noticed a lot of the other custom wagons out there were orange. At the last minute we got in touch with our PPG representative, Doug Smith and decided on their fairly new product, Harlequin Essence. After seeing the wagon in purple we just couldn't imagine it in orange! Next it was assembled and sent to Ogden Top and Trim for custom leather interior. When we got the car back from the trim shop we were able to complete all of our finishing touches. From start to finish the total time spent on this vehicle was four really exciting months!





**Details:**

Engine: 2001 Chevy 350  
Trans: 350 Turbo  
Rear End: Stock 10 bolt  
Suspension: Easy Street By Air Lift  
Brakes: Front Disc rear drum  
Paint: PPG Harlequin Essence  
Custom Blend By Route 66  
Interior: Custom Bucket Seats and  
console in leather custom mde  
dash, doors, and quarter structure.  
Glass: Custom made

**Body Modifications:**

Wheels: Billet Specialities; 6T69  
Mounts on BF Goodrich Radials  
Gauges: Autometer  
Custom Built a 2 door wagon out  
of a 4 door wagon.  
1967 Chevy 2 Door wagon was  
never made.

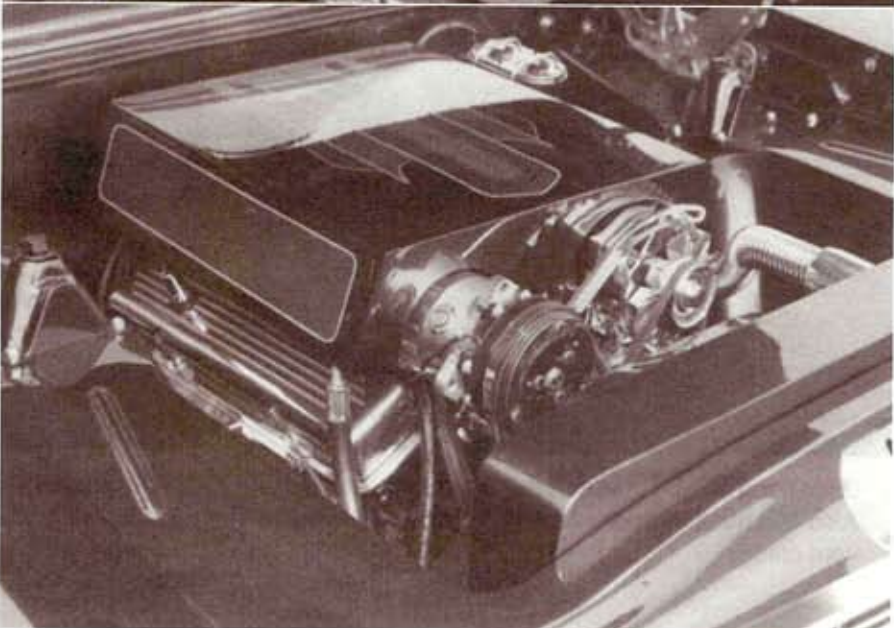
Removed & filled all seams  
Removed & filled emblems  
removed & filled side moldings  
Removed & filled all rocker mold-  
ings

Removed venty glass  
Laid down all window posts  
Custom made posts  
Laid down tail lamps  
Laid down third lamp in roof  
Removed door handles and locks  
Removed tailgate handle and lock  
Custom Power windows  
Reconstructed tailgate with hidden  
hinges

Frenched rear bumper  
Molded in bumper filled boots  
Molded door jambs  
Molded hood underside  
Filled cowl vents  
Removed & filled wipers  
Custom made mirrors  
Redesigned engine compartment  
Molded engine compartment  
Molded core support  
Modified & detailed Undercarriage  
Filled drip edges

**Special Thanks to...**

Route 66 Motorsports; Bill Jelinek  
Central Auto Rebuilders, Inc.; Bill  
Jelinek  
Ogden Top & Trim; John Mayer  
C/Y South Suburban Shop Supply;  
PPG paint; Doug Smith  
Wayne Bushey & NNN  
Brian Zelenka







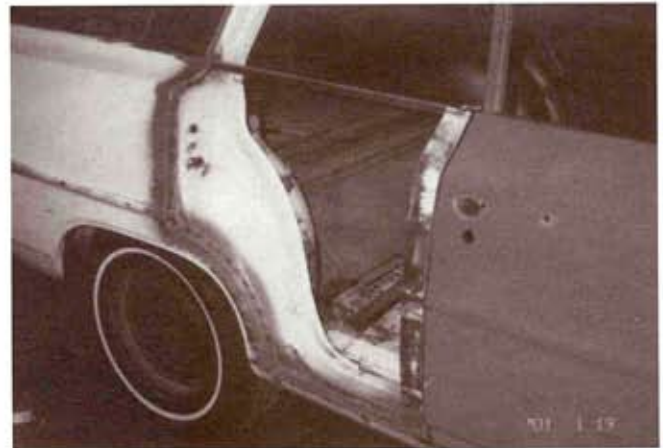
The body when I purchased it.



Eliminated vent glass and built panel and window channell for base for custom made mirrors.



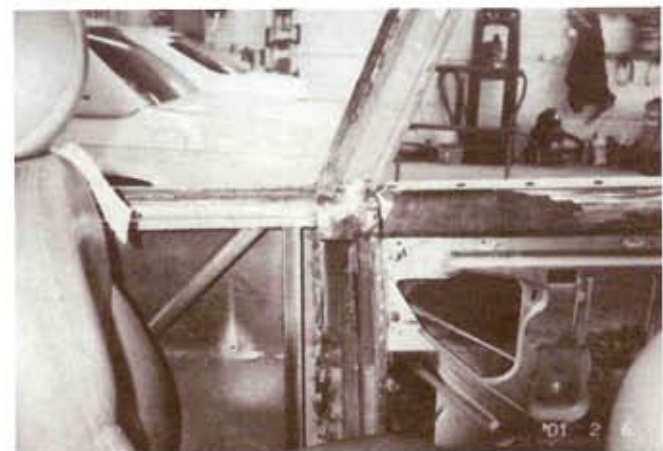
Left side fitted and welded waiting to be ground down for filler.



Close up of start of structure and rebuilding of quarters to match door.



Door hung on and quarter struture framing started. Also laid back of door frame down and eliminated vent glass.



Close up of inner structure or quarter all reinforced with 2x2 square stock w 1x1 square stock inside double wall.



Body with door and post, quarter welded in place sitting in lowered position.



Filler blocked and ready fo primer.



Fitting 98 Monte Carlo seats and then cut them down and changed structure.



Shot of inner dash and fire wall cut out for modification for new fabricated fire wall and AC-heat.

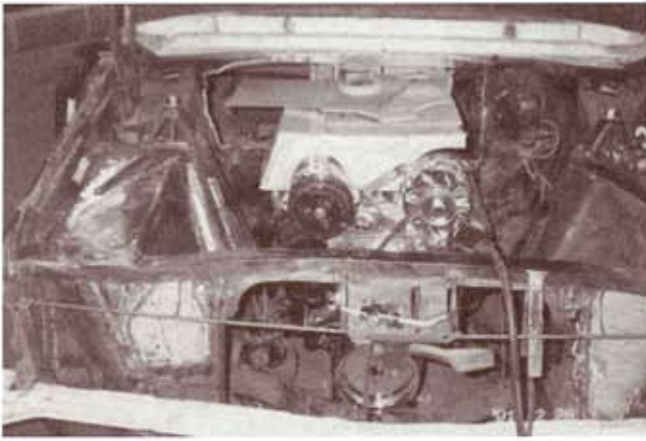


Cut out and fit motor.

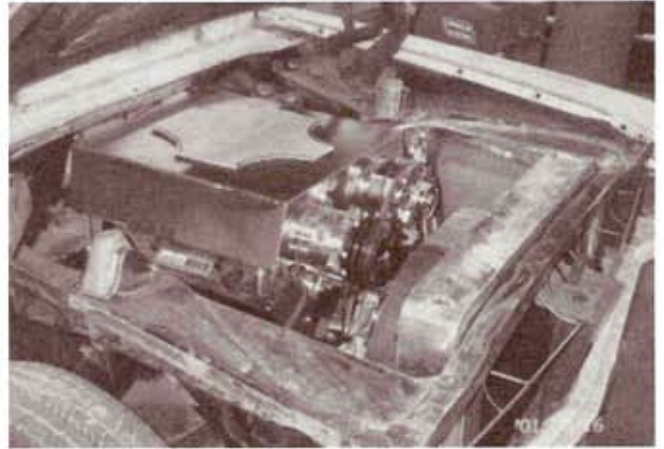


Original fitting and mock up.





Mock up of thoughts on air cleaner and front of core support.



Motor compartment side panel & shroud fabricated. Air cleaner started.



Driver side dash roughed in and also swooped door tops.



Fabricating dash used parts on another 67 wagon and fabricated the rest.



Filled cowl vents and cut out original vent louvers and fabricated and modified the for AC vents new ones.



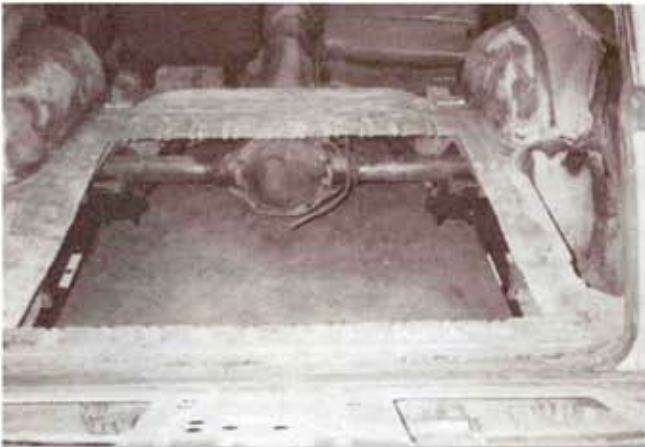
Quarter tail lights layed down.



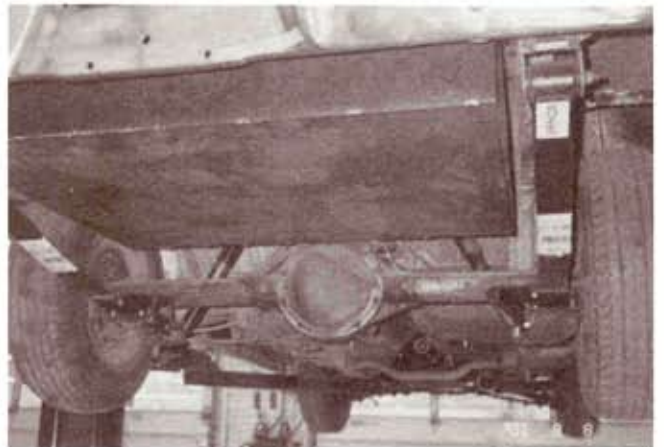
Third brake light in roof.



Inner quarter interior fabrication.



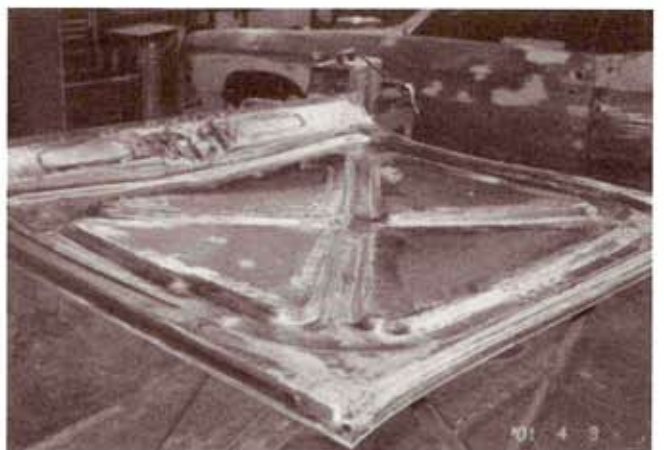
Cut out floor for boxing.



Fabricated supply box for fuel cell, battery, air management and radio.



Welded in and fitted drip rail to roof.



Filled underside of hood 16 gauge and molded complete.





Side shot of quarter tail lamp and restructure frenched in bumper.



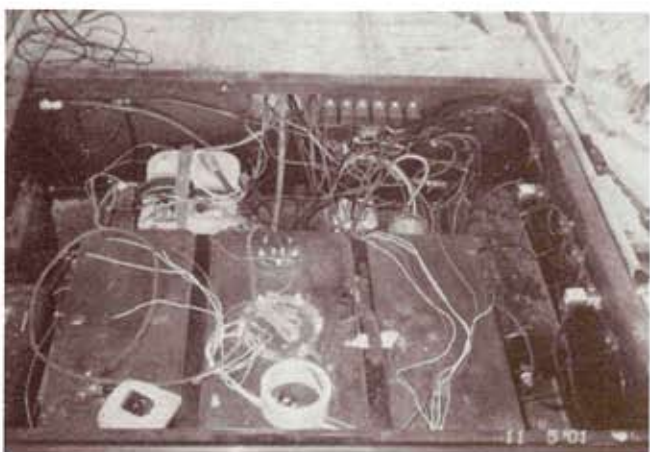
Body primed waiting to be blocked again.



Underside primed.



Dash and interior going together. Auto Meter gauges, Billet Speciality gauge cluster, Painless Wiring.



Inside box what a mess.



Motor going together.